

# Knocker «FKL mi»

**Self-controlled.**  
**Force of impact adjustable.**

## Properties

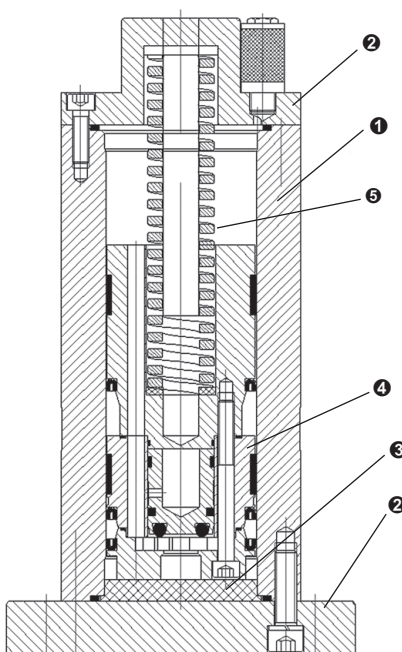
- Wide range of impact force and interval
- Impact force and interval adjustable
- Use up to 120° C
- HT-version up to 150°C and LT-Version down to -40°C on request
- Flexible range of application
- Also available with ATEX certification

## Field of application

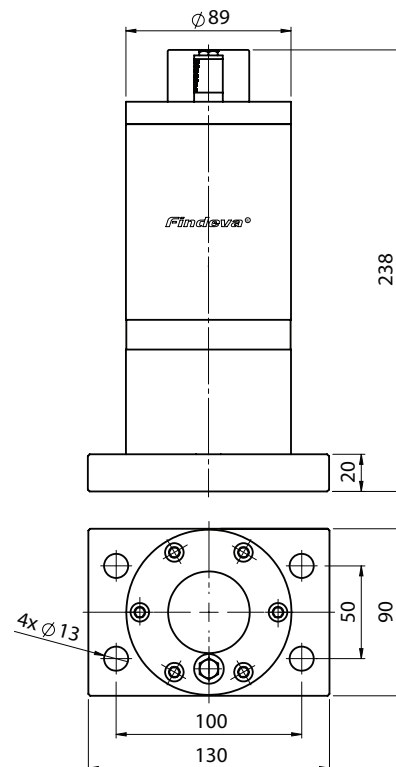
Resistant against extreme environmental conditions. Knocking off adhering material from container walls such as silos, chutes, filter outlets, reactors and pipelines.

## Construction

A piston is forced against a spring by compressed air. When the impact piston passes the control outlet duct, it is vented suddenly and the piston bounces against a baffle plate. The piston closes the air duct and the procedure is repeated at the interval set by the throttle.



- 1 Housing of hard-anodized aluminium alloy
- 2 Cap and baseplate of hard anodizes aluminium
- 3 Baffle plate of impact-resistant plastic
- 4 Piston in steel
- 5 Compression spring



## Technical data an weight

Model	Pressure [bar]	Work impact [Nm]	Impulse/ impact [Ns]	Stroke [min <sup>-1</sup> ]	Air-consumption [l/impact]	For wall thickness to [mm]	Weight [kg]
FKL-100 mi	6-8	10 - 40	5 - 10	0.5-10	0.5-1.1	5	4.5