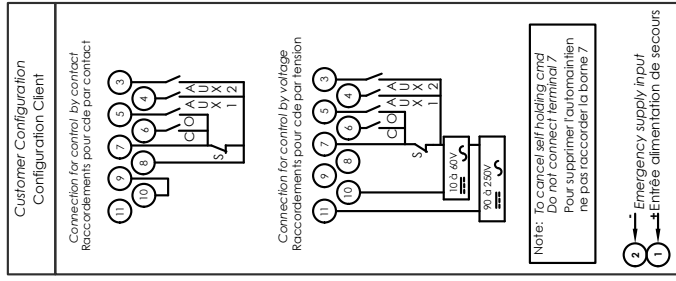
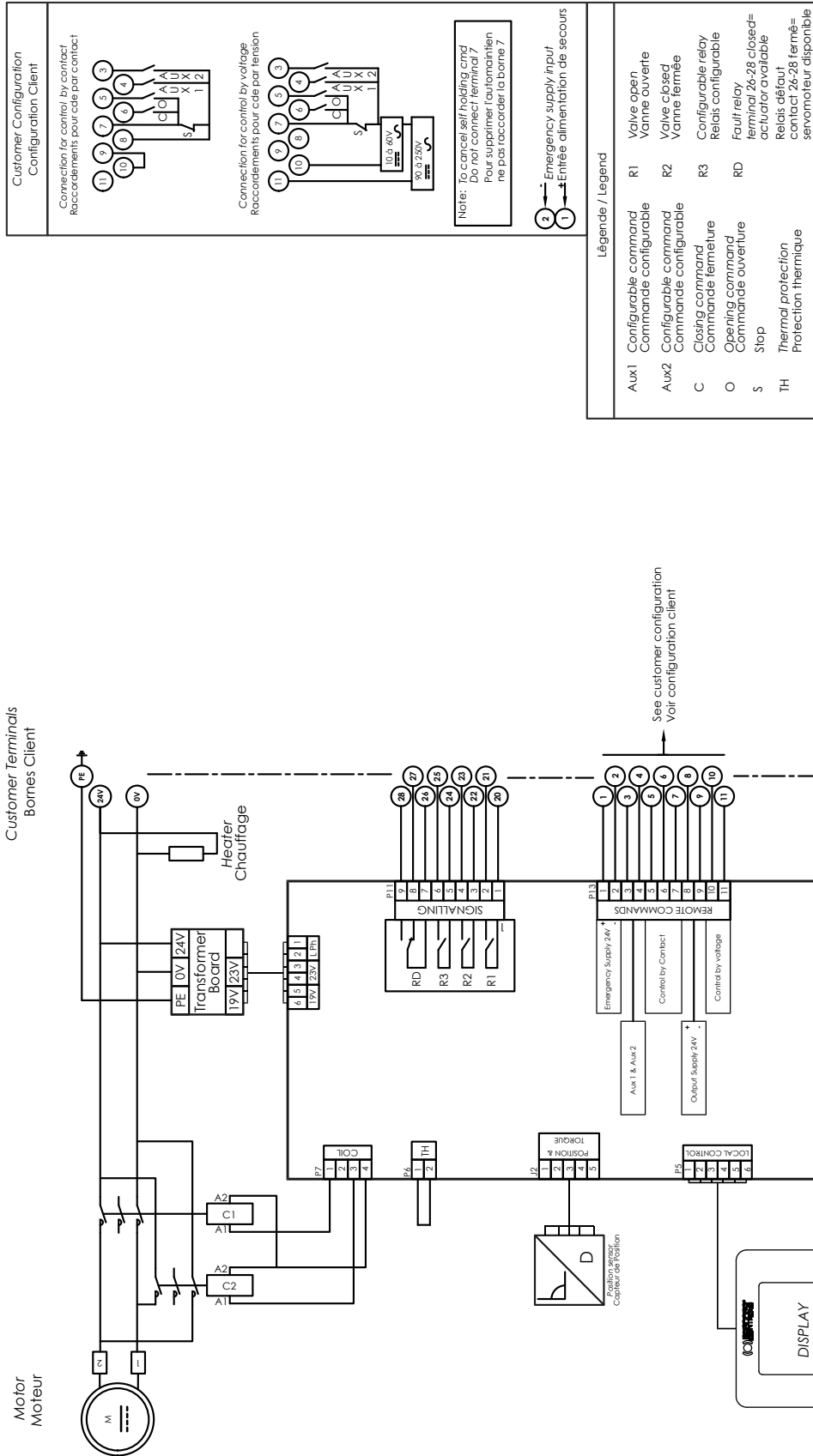


Weight / Poids 15 kg

Stem size (mm) / Taille tige (mm)

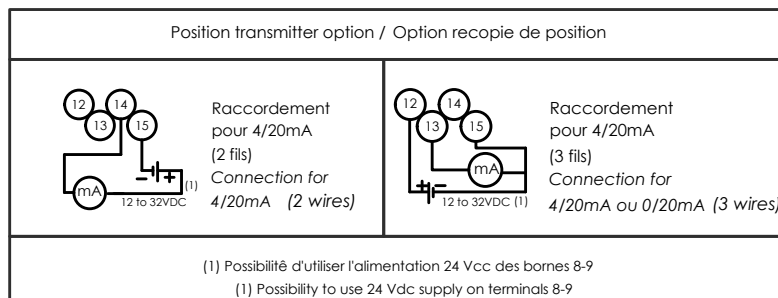
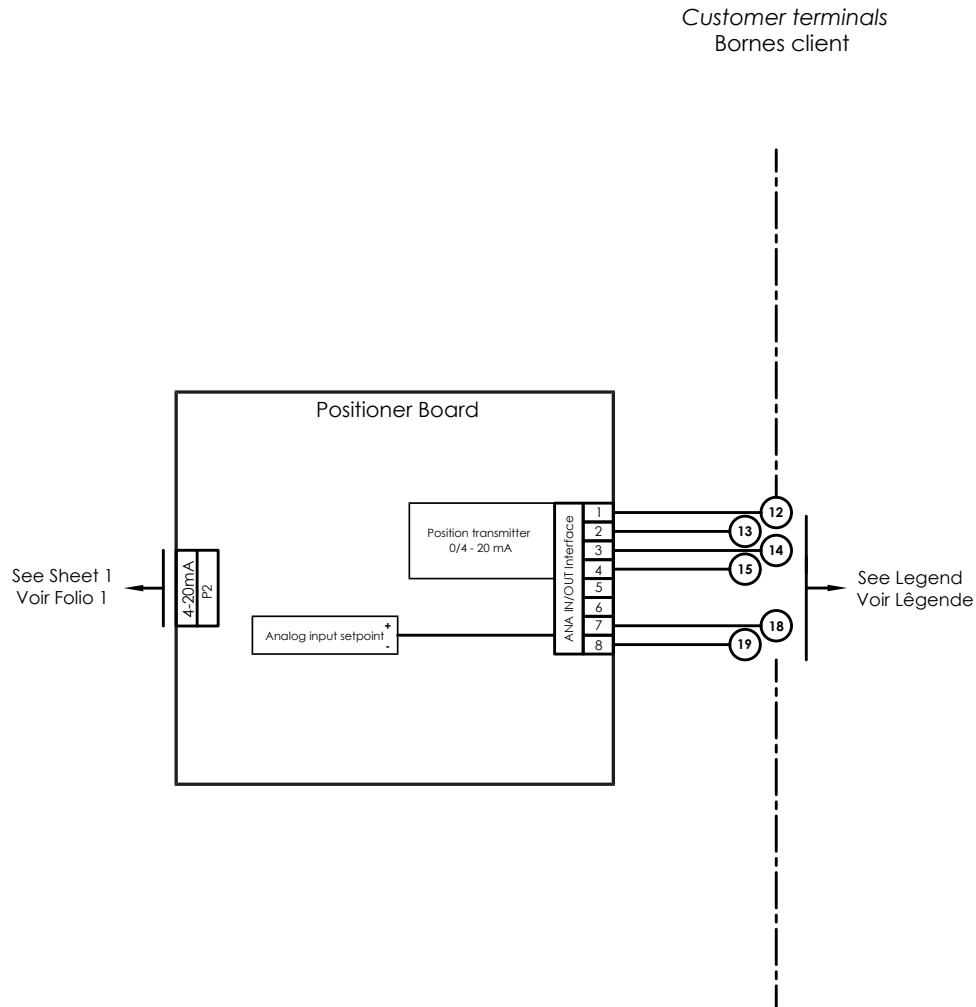
Stem size (mm) / Taille tige (mm)	Square (max.) / Carré (max.)	Bore (mm) / Alésage (mm)
AQ5 / AQ10 / AQ15	19	22

NOTA: No contractual draft / Plan non contractuel
 *1 - The actuator is represented in its maximal size / L'actionneur est représenté dans sa taille maximale
 *2 - Representation of the socket in closed position / Représentation de la douille en position fermée
 *3 - Dimension to allow for disassembly / Côte de démontage



Légende / Legend

Aux1	Configurable command	R1	Valve open
Aux2	Configurable command	R2	Valve closed
C	Commande configurable	R3	Configurable relay
O	Closing command	RD	Fault relay
S	Opening command		terminal 26-28 closed=
TH	Stop		actuator available
	Thermal protection		Relais défaut
	Protection thermique		contact 26-28 fermé=
			servomoteur disponible



TEC01-03_E+F_GRP_rev06B