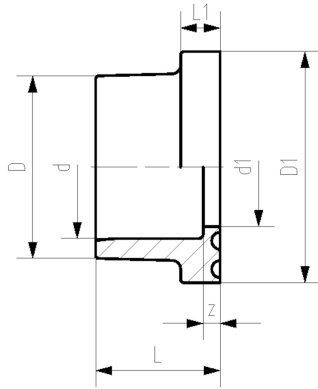




PROGEF Standard Flange adaptor
Joining face flat/serrated (PN10)

Model:

- Material: PP-H
- Connection: according to EN ISO 15494-1
- Counterpart: flange adaptor flat/serrated or with O-ring groove
- Gasket: profile flange gasket EPDM No. 48 44 07, FKM No. 49 44 07
- Flanges: PP - steel, No. 27 70 02, PP-V, No. 27 70 04



d (mm)	DN (mm)	PN (bar)	Code	SP	Weight (kg)	D (mm)	D1 (mm)	L (mm)	L1 (mm)	d1 (mm)	z (mm)
20	15	10	727 790 206	10	0.011	27	45	19	7	16	5
25	20	10	727 790 207	10	0.022	33	58	21	9	21	5
32	25	10	727 790 208	10	0.033	41	68	23	10	28	5
40	32	10	727 790 209	10	0.046	50	78	25	11	36	5
50	40	10	727 790 210	5	0.060	61	88	28	12	45	5
63	50	10	727 790 211	20	0.090	76	102	32	14	57	5
75	65	10	727 790 212	10	0.155	90	122	36	16	69	5
90	80	10	727 790 213	10	0.204	108	138	42	17	84	7
110	100	10	727 790 214	10	0.286	131	158	48	18	100	7

The technical data are not binding. They neither constitute expressly warranted characteristics nor guaranteed properties nor a guaranteed durability. They are subject to modification. Our General Terms of Sale apply.

Georg Fischer Piping Systems Ltd, Postfach, CH-8201 Schaffhausen/Switzerland

Phone +41 -(0)52-631 1111

e-mail: info.ps@georgfischer.com

Internet: <http://www.gfps.com>