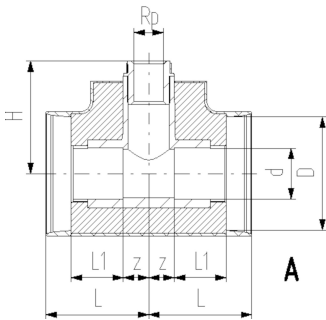




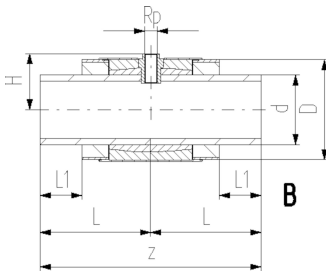
A



B



A



B

COOL-FIT 2.0 Installation fitting type 313 Rp

Model:

- Pre-insulated PE100 SDR11, metric
- Insulation made from GF HE foam
- Impact resistant. Color: black
- With threaded branch for sensors (i.e temperature, pressure)
- A: Electrofusion Fitting with integrated sealing lip, for a moisture-proof and vapour tight sealing
- B: Spigot Fitting with free end (separate electrofusion fitting needed for joining)

d/D (mm)	Thread Type	Size (inch)	DN (mm)	SDR	PN (bar)	Code	Weight (kg)
32/75	Rp	½	25	11	16	738 313 408	0.138
40/90	Rp	½	32	11	16	738 313 409	0.216
40/90	Rp	¾	32	11	16	738 313 459	0.216
50/90	Rp	½	40	11	16	738 313 410	0.308
50/90	Rp	¾	40	11	16	738 313 460	0.307
63/110	Rp	½	50	11	16	738 313 411	0.493
63/110	Rp	¾	50	11	16	738 313 461	0.492
75/125	Rp	½	65	11	16	738 313 412	0.678
75/125	Rp	¾	65	11	16	738 313 462	0.677
90/140	Rp	½	80	11	16	738 313 413	1.025
90/140	Rp	¾	80	11	16	738 313 463	1.023
110/160	Rp	½	100	11	16	738 313 414	1.765
110/160	Rp	¾	100	11	16	738 313 464	1.763
140/200	Rp	½	125	11	16	738 313 416	3.406
140/200	Rp	¾	125	11	16	738 313 466	3.401

L (mm)	L1 (mm)	z (mm)	H (mm)	Closest inch (inch)	Type
73	36	16	75	1	A
81	40	21	85	1 ¼	A
81	40	21	88	1 ¼	A
88	44	24	94	1 ½	A
88	44	24	97	1 ½	A
97	48	29	113	2	A
97	48	29	116	2	A
110	55	35	99	2 ½	A
110	55	35	102	2 ½	A
123	62	42	113	3	A
123	62	42	116	3	A
148	72	56	128	4	A
148	72	56	131	4	A
224	84	447	110	5	B
224	84	447	113	5	B

The technical data are not binding. They neither constitute expressly warranted characteristics nor guaranteed properties nor a guaranteed durability. They are subject to modification. Our General Terms of Sale apply.

Georg Fischer Piping Systems Ltd, Postfach, CH-8201 Schaffhausen/Switzerland

Phone +41 -(0)52-631 1111

e-mail: info.ps@georgfischer.com

Internet: <http://www.gfps.com>