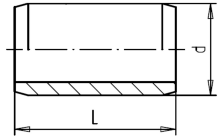
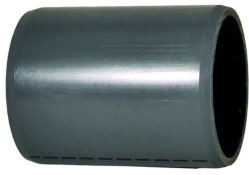


Data sheet

valid from: 8/23/21



Barrel nipple ABS metric

Model:

- For the shortest possible distance between fittings
- Overall length L = 2 x socket length
- With solvent cement spigots on both sides

PN (bar)	d (inch)	d (mm)	Size (inch)	Code	Weight (kg)	closest inch (inch)	L (mm)
16		20		729 900 906	0.008	½	32
16		25		729 900 907	0.008	¾	38
10		32		729 900 908	0.007	1	44
10		40		729 900 909	0.016	1 ¼	52
10		50		729 900 910	0.032	1 ½	62
10		63		729 900 911	0.059	2	76
10	2 ½	75	2 ½	729 900 912	0.095	2 ½	88
10		90		729 900 913	0.161	3	102
10		110		729 900 914	0.282	4	122

The technical data are not binding. They neither constitute expressly warranted characteristics nor guaranteed properties nor a guaranteed durability. They are subject to modification. Our General Terms of Sale apply.

Georg Fischer Piping Systems Ltd, Postfach, CH-8201 Schaffhausen/Switzerland

Phone +41 -(0)52-631 1111

e-mail: info.ps@georgfischer.com

Internet: <http://www.gfps.com>