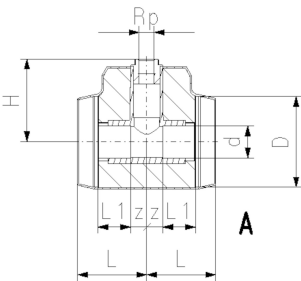




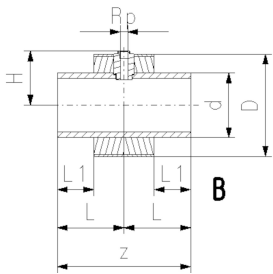
COOL-FIT 4.0 Installation fitting type 313 Rp d32-d225

Model:

- Pre-insulated, PE100, SDR11, metric
- Insulation made from GF HE foam
- Impact resistant. Color: black
- With threaded branch for sensors (i.e temperature, pressure)
- A: Electrofusion Fitting with integrated sealing lip, for a water and vapour tight sealing
- B: Spigot Fitting with free end



d/D (mm)	Thread Type	Size (inch)	DN (mm)	SDR	PN (bar)	Code	Weight (kg)
32/90	Rp	½	50	11	16	738 313 608	0.169
40/110	Rp	½	32	11	16	738 313 609	0.267
40/110	Rp	¾	32	11	16	738 313 659	0.269
50/110	Rp	½	40	11	16	738 313 610	0.354
50/110	Rp	¾	40	11	16	738 313 660	0.356
63/125	Rp	½	50	11	16	738 313 611	0.537
63/125	Rp	¾	50	11	16	738 313 661	0.539
75/140	Rp	½	65	11	16	738 313 612	0.773
75/140	Rp	¾	65	11	16	738 313 662	0.774
90/160	Rp	½	80	11	16	738 313 613	1.164
90/160	Rp	¾	80	11	16	738 313 663	1.165
110/180	Rp	½	100	11	16	738 313 614	1.944
110/180	Rp	¾	100	11	16	738 313 664	1.944
160/250	Rp	½	150	11	16	738 313 617	2.496
160/250	Rp	¾	150	11	16	738 313 667	2.489
225/315	Rp	½	200	11	16	738 313 620	5.155
225/315	Rp	¾	200	11	16	738 313 670	5.146



d/D (mm)	H (mm)	L (mm)	L1 (mm)	z (mm)	Type
32/90	95	79	36	18	A
40/110	105	87	40	22	A
40/110	108	87	40	22	A
50/110	107	94	44	25	A
50/110	110	94	44	25	A
63/125	120	103	48	30	A
63/125	123	103	48	30	A
75/140	127	116	55	36	A
75/140	130	116	55	36	A
90/160	139	130	62	43	A
90/160	142	130	62	43	A
110/180	151	154	72	57	A
110/180	154	154	72	57	A
160/250	134	165	90	330	B
160/250	134	165	90	330	B
225/315	166	185	110	370	B
225/315	169	185	110	370	B

The technical data are not binding. They neither constitute expressly warranted characteristics nor guaranteed properties nor a guaranteed durability. They are subject to modification. Our General Terms of Sale apply.

Data sheet

valid from: 9/13/21



e-mail: info.ps@georgfischer.com

Internet: <http://www.gfps.com>